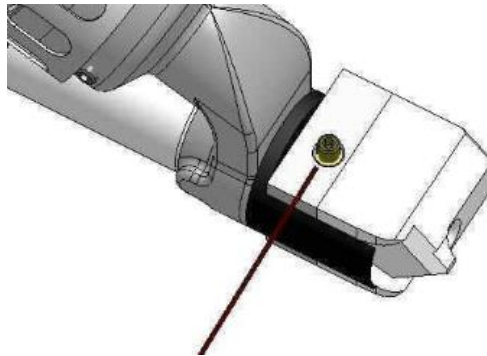
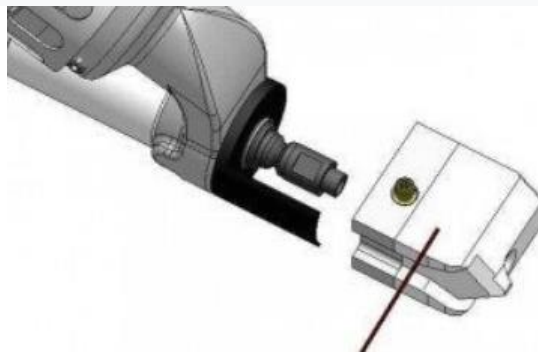


Angle head for MUNSCH Extruder Series 18 and Series 25.

Angle head assembly instructions



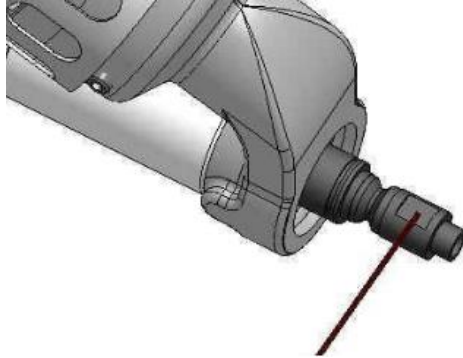
1. Loosen quill screw.



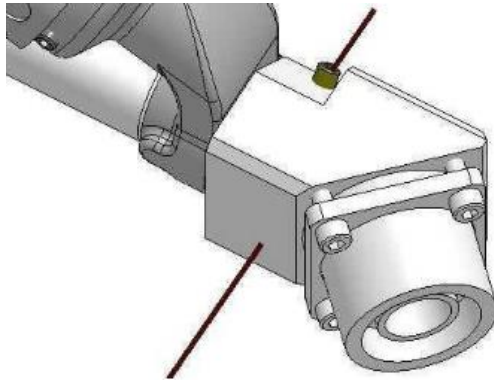
2. Take off welding shoes



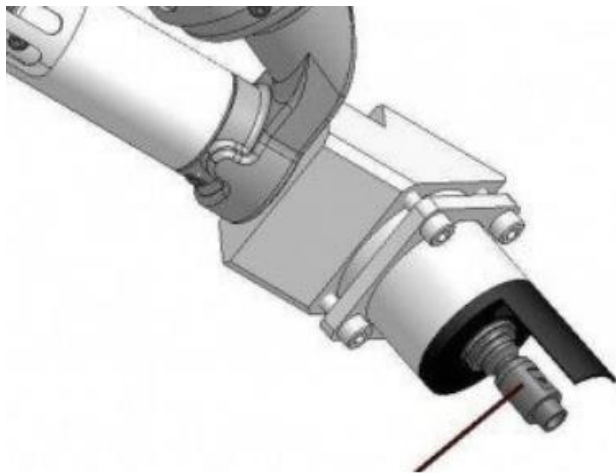
3. Nozzle (Ø 3 or Ø 4 mm.) with preheater nozzle unscrewed (Left thread).



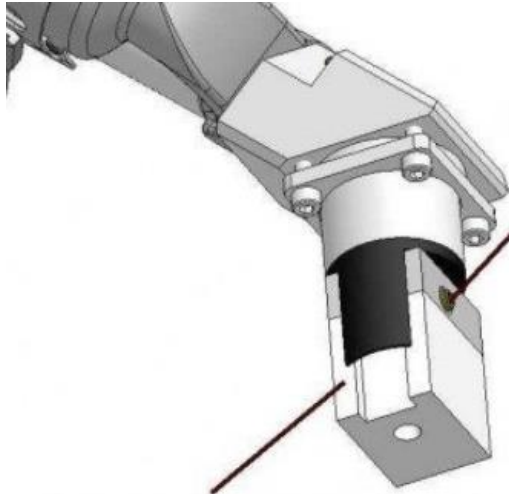
4. Nozzle (Ø 6 mm.) Screwed in (Left thread).



5. Angle head is mounted and screw is tightened.



6. Nozzle (Ø 6 mm.) With preheater nozzle screwed in (Left thread).



7. Welding shoes are turned in the desired direction and the quill screw is tightened.

